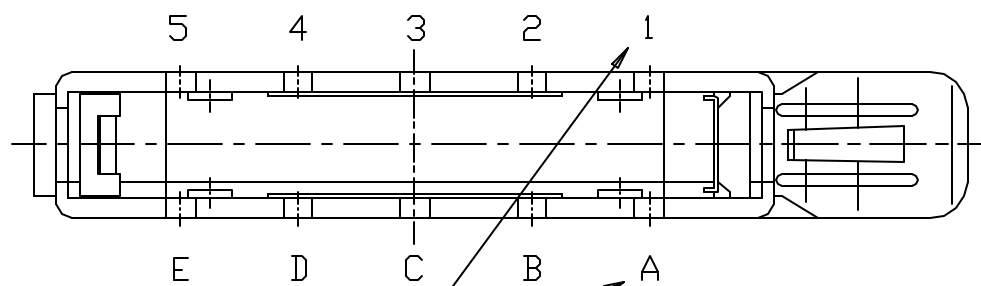
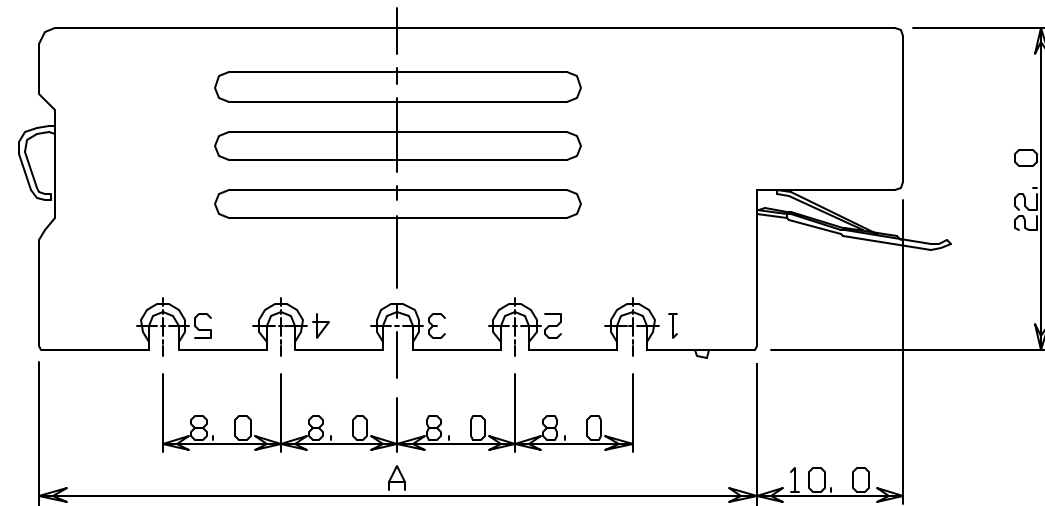
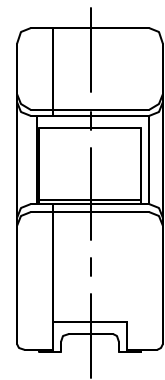
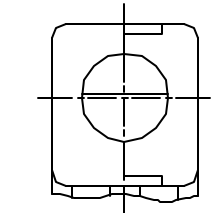
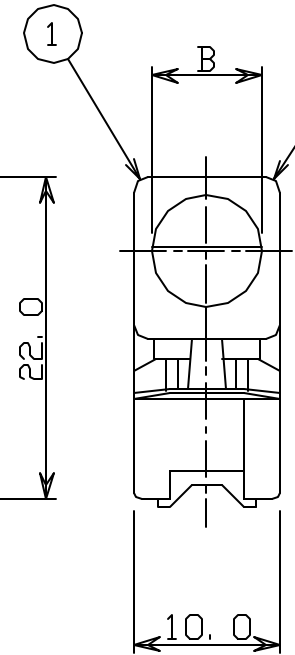


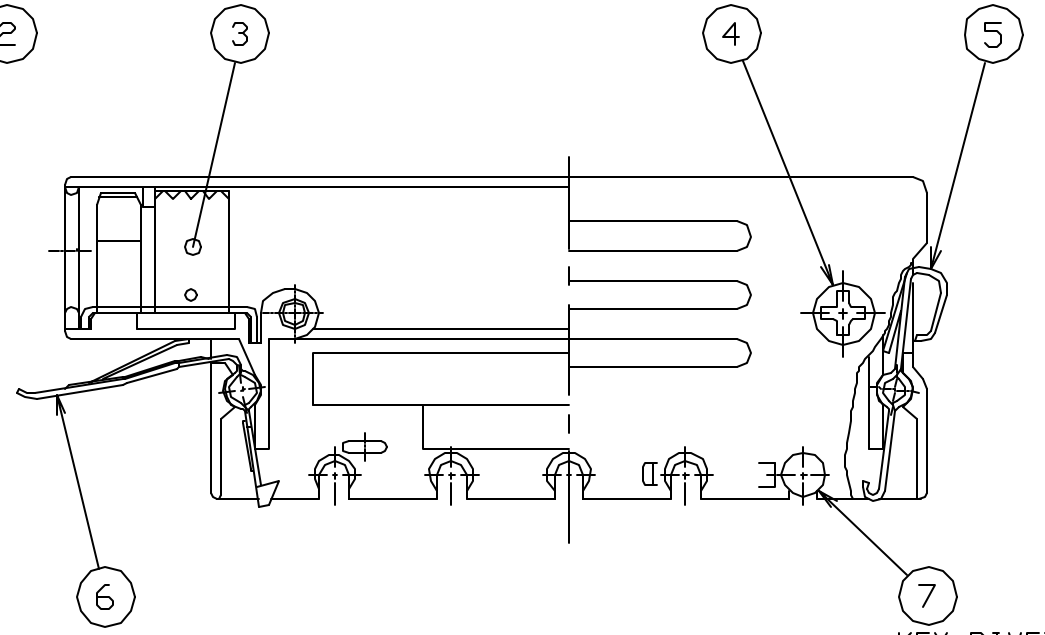
NOTE 1. THIS DRAWING IS 50 POS.



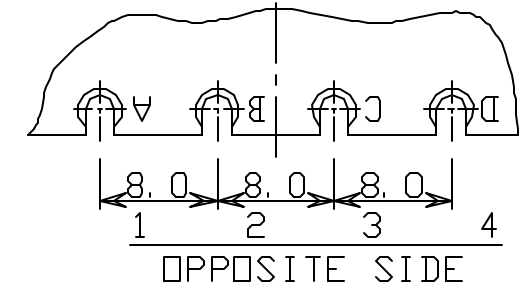
KEY POS. NO.



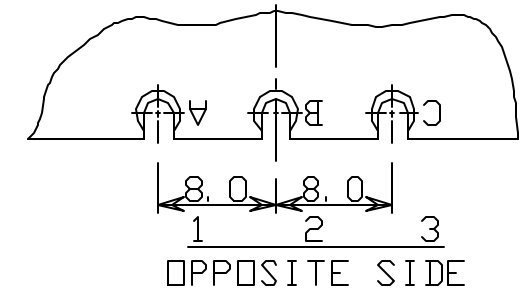
20, 28 POS.



KEY RIVET FOR KEYING



28, 36 POS.



20 POS.

HONDA
PRINT RM
NOV. 12. 1997
ISSUED

PART NO.

1. WITH KEYING

THE UNDERLINED SECTION AT THE END OF PART NUMBER IS FILLED WITH 4 KINDS OF THE STANDARD KEY POSITION CODES.

EXAMPLE: PCS-E(NO. POS. OF) WSP-1E

2. WITHOUT KEYING

PCS-E(NO. POS. OF) WSP

KP-340A	ø7.5
KP-340B	ø6.5
KP-340C	ø6.0
KP-340D	ø5.5
KP-340E	ø5.0
CLAMP TOOL	APPLICABLE CABLE

7	KEY RIVET	BRASS (2)	NICKEL PLATING	P/N PCS-E-PK
6	SPRING LOCK B	STAINLESS STEEL		
5	SPRING LOCK A	STAINLESS STEEL		
4	ØFLAT HEAD SCREW	STEEL	NICKEL PLATING	M2x6
3	CABLE CLAMP	STAINLESS STEEL		
2	COVER A	ZINC ALLOY	NICKEL PLATING	
1	COVER B	ZINC ALLOY	NICKEL PLATING	

LTR.	DATE	BY	REV.	DESCRIPT	NO.	PART NAME	MATERIAL	QTY	FINISH	NOTE
	NOV. 12. 1997		2/1			HONDA TSUSHIN KOGYO., LTD.				
DR	DE	CHK	CHK	APP.		NAME	PCS-E TYPE CABLE COVER WITH KEYING & WITHOUT			
						PART NO.	PCS-E()WSP-()			

PART NO.	NO. OF POS.	A	B	CABLE CHARACTERISTIC OUTSIDE DIAMETER	STANDARD KEY POSITIONS (4 TYPES)
PCS-E50WSP-()	50	48.9	ø7.6	ø6.5	1E, 2D, 4B, 5A
PCS-E36WSP-()	36	40.2	ø7.6	ø6.0	1D, 2C, 3B, 4A
PCS-E28WSP-()	28	35.0	ø6.0	ø5.5	1D, 2C, 3B, 4A
PCS-E20WSP-()	20	30.0	ø6.0	ø5.0	1B, 1C, 2A, 3A