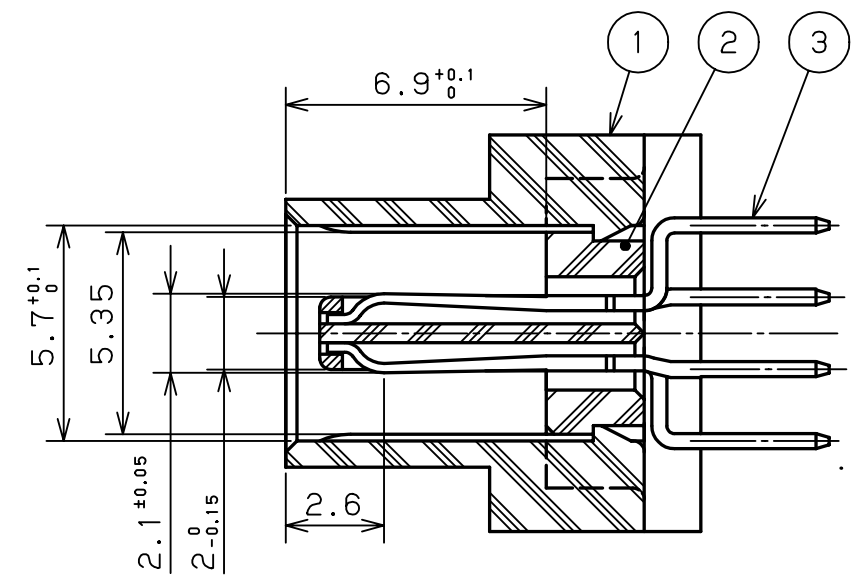
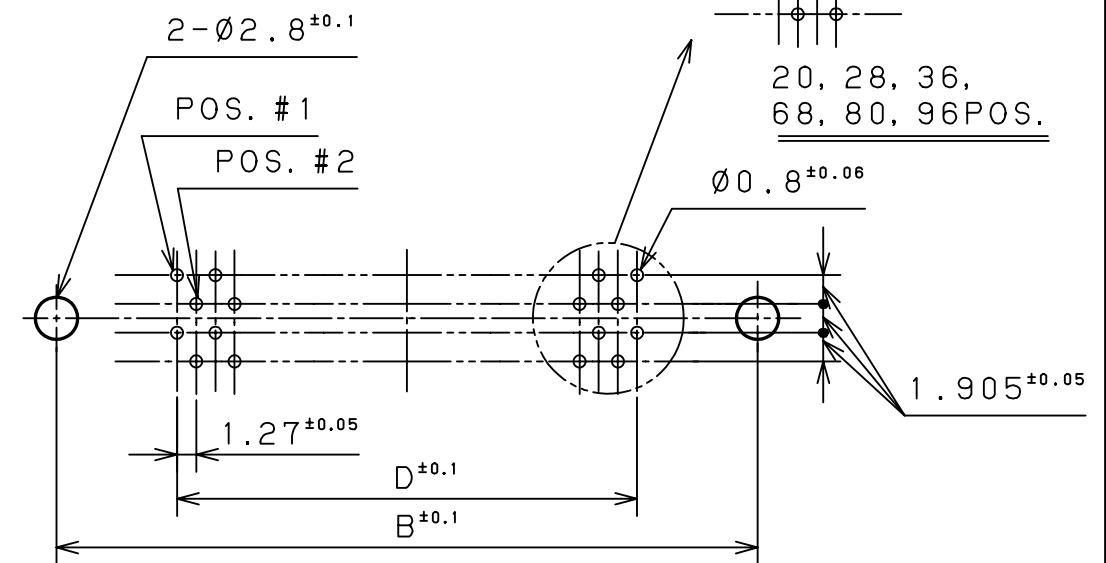
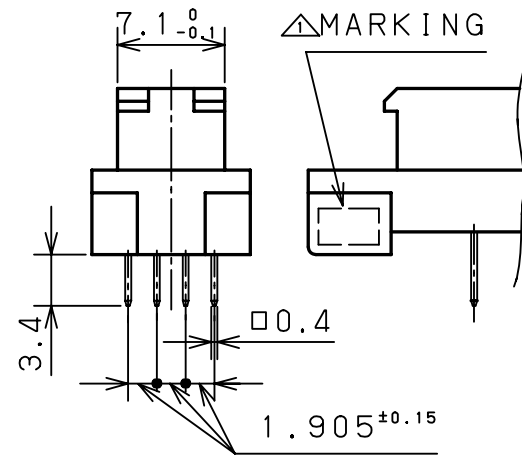
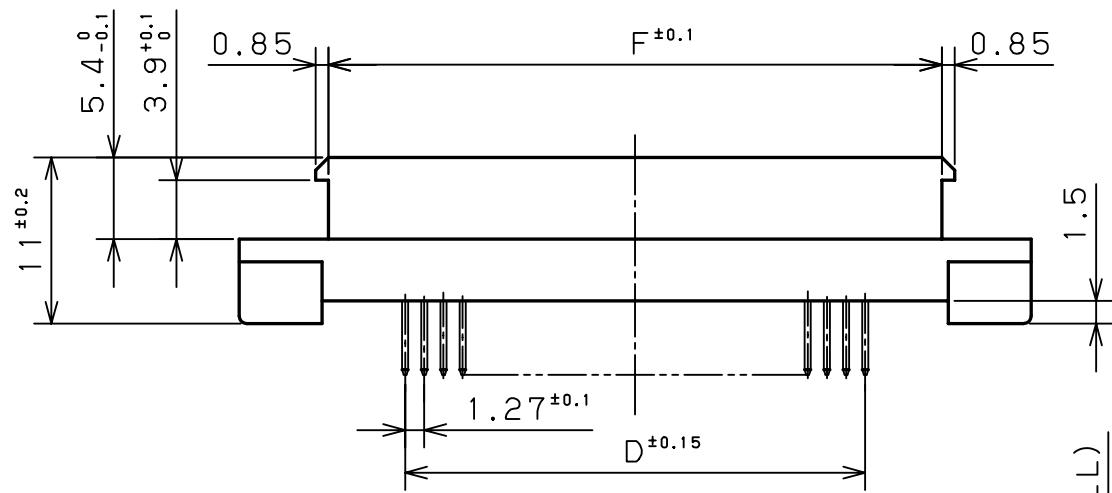


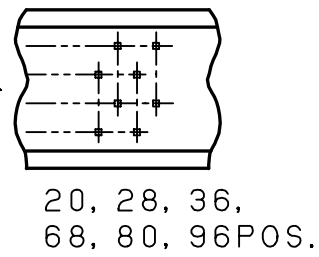
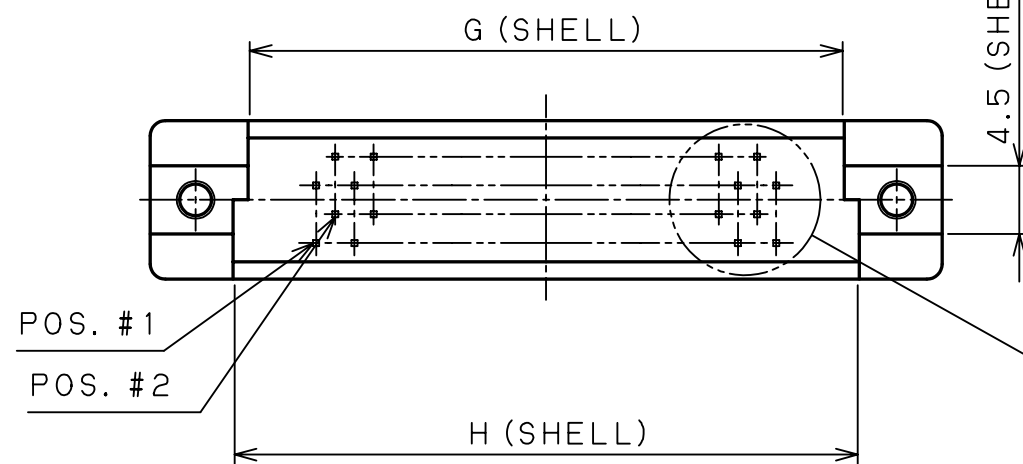
NOTE 1. CONTACT PLATING
 CONTACT AREA: GOLD 0.2μm MIN.
 TERMINATION AREA: TIN LEAD
 ALL OVER NICKEL PLATING



X-X SECTION (5/1)



Recommended
 P.C.B LAYOUT (CONN. MOUNT. SIDE)



No. of Pos.	PART No.	A	B	C	D	E	F	G	H
96	PCR-E96MD	81.66	75.66	61.46	1.27x47=59.69	64.71	69.86	68.69	70.69
80	PCR-E80MD	71.50	65.50	51.30	1.27x39=49.53	54.55	59.70	58.53	60.53
68	PCR-E68MD	63.88	57.88	43.68	1.27x33=41.91	46.93	52.08	50.91	52.91
50	PCR-E50MD	52.45	46.45	32.25	1.27x24=30.48	35.50	40.65	39.48	41.48
36	PCR-E36MD	43.56	37.56	23.36	1.27x17=21.59	26.61	31.76	30.59	32.59
28	PCR-E28MD	38.48	32.48	18.28	1.27x13=16.51	21.53	26.68	25.51	27.51
20	PCR-E20MD	33.40	27.40	13.20	1.27x 9=11.43	16.45	21.60	20.43	22.43

LTR.	DATE	BY	REV.	DESCRIPT	No.	PART NAME	MATERIAL	QTY	FINISH	NOTE	
					3	CONTACT	PHOSPHOR BRONZE	n		NOTE. 1	
					2	INSULATOR	PBT RESIN (GF)	1		UL94V-0 BLACK COLOR	
	JAN.30 2003	T. K		CHANGE MARKING	1	SHELL	ZINC DIE CASTING	1		NICKEL PLATED OVER COPPER	
DATE: OCT.31.1997						SCALE: 2 / 1		UNIT: mm (INCH)		3RD. A. P	
APP. DATE&REV.						HONDA TSUSHIN KOGYO CO., LTD.					
DR. T. KAWANO						DE. T. KAWANO		CHK. T. SOGO		CHK. K. HOMMA	
APP. K. SATO						NAME		1.27mm SPACING PCR-E TYPE STRAIGHT DIP MALE CONNECTOR			
PART NO.						PCR-E () MD					