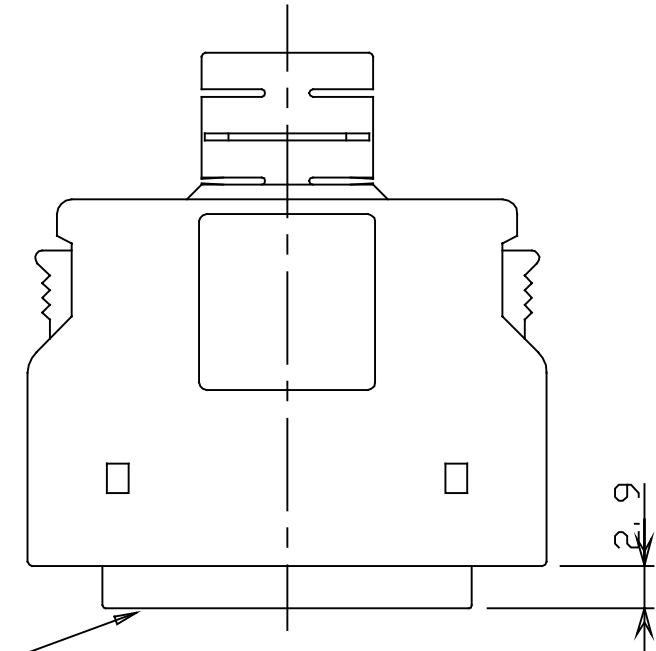
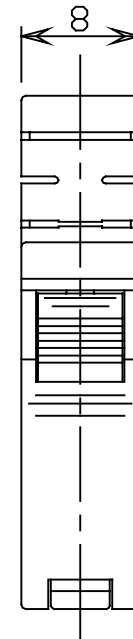
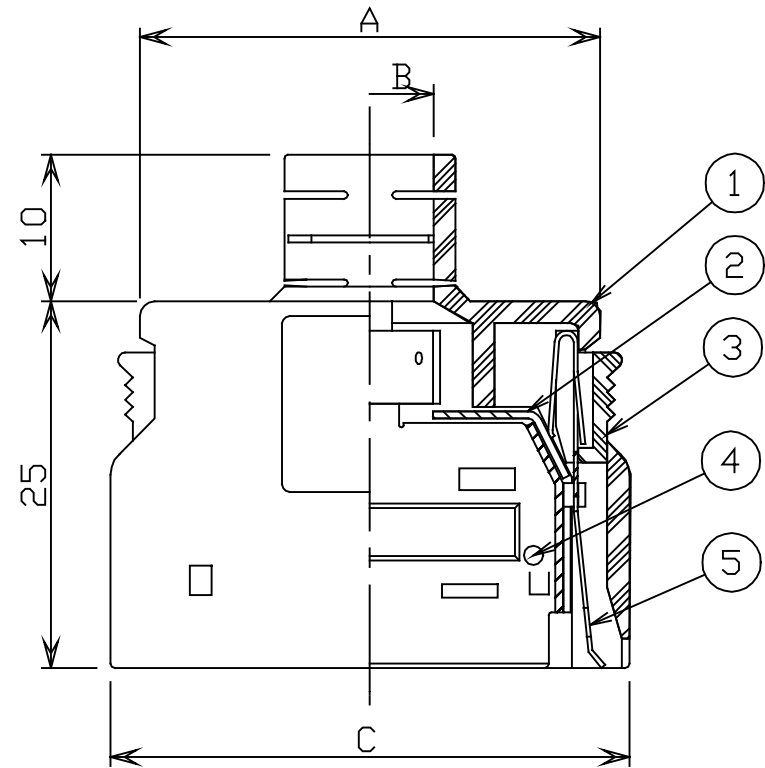
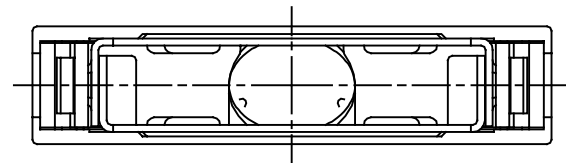


HONDA
PRINT RM
OCT. 13. 1995
ISSUED



HDR-E()MAG1



NOTE 1. APPLICABLE CABLE
WIRE SIZE: AWG#30(7/0.1), ϕ 0.58(CORE JACKET O. D)
SHIELDED: SINGLE BRAIDS
OUTER DIAMETER OF JACKET(PVC)

HDR-E50LPA	50	31.4	7x8.7	35.4
* HDR-E36LPA	36	25.8	6.5x7.5	29.8
HDR-E26LPA	26	21.8	6x7	25.8
HDR-E14LPA	14	17.0	ϕ 5.6	21.0
PART NO.	NO. OF POS.	A	B	C
DIMENSIONS				

* UNDER CONSIDERATION

5	LOCK SPRING	STAINLESS STEEL	2	---	---				
4	INNER SHELL A	STEEL	1	NICKEL PLATING	---				
3	BUTTON	ABS RESIN	2	---	UL94V-0 GRAY				
2	INNER SHELL B	STEEL	1	NICKEL PLATING	---				
1	PLASTIC COVER	ABS RESIN	1	---	UL94V-0 GRAY				
LTR.	DATE	BY	REV. DESCRIPT	NO.	PART NAME	MATERIAL	QTY	FINISH	NOTE
	OCT. 13 1995	A. M	REVISED						
DATE			SCALE	UNIT	HONDA TSUSHIN KOGYO., LTD.				
AUG. 11. 1994			2 / 1	mm(INCH)	3RD. A. P.				
DR	DE	CHK	CHK	APP.	NAME	HDR-E TYPE SHIELDED COVER			
					PART NO.	HDR-E()LPA			REV. 1A

HDR-E()LPA ***** EA