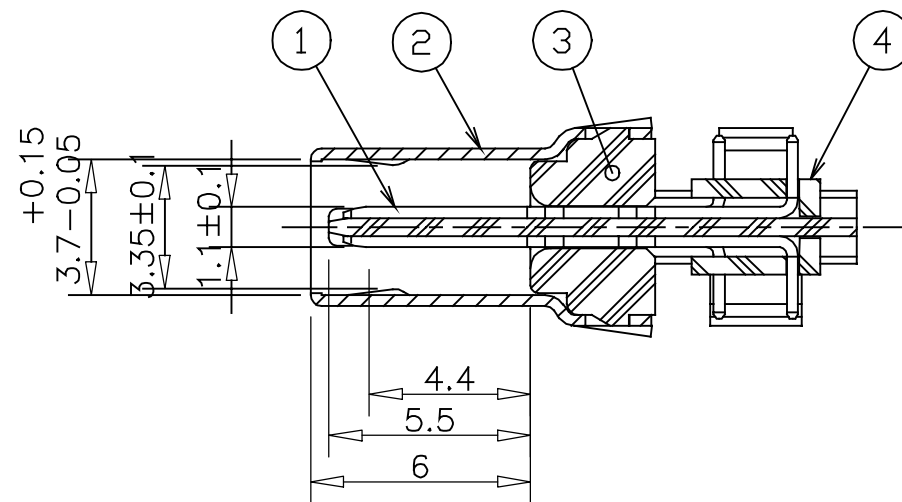
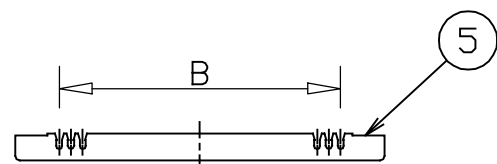
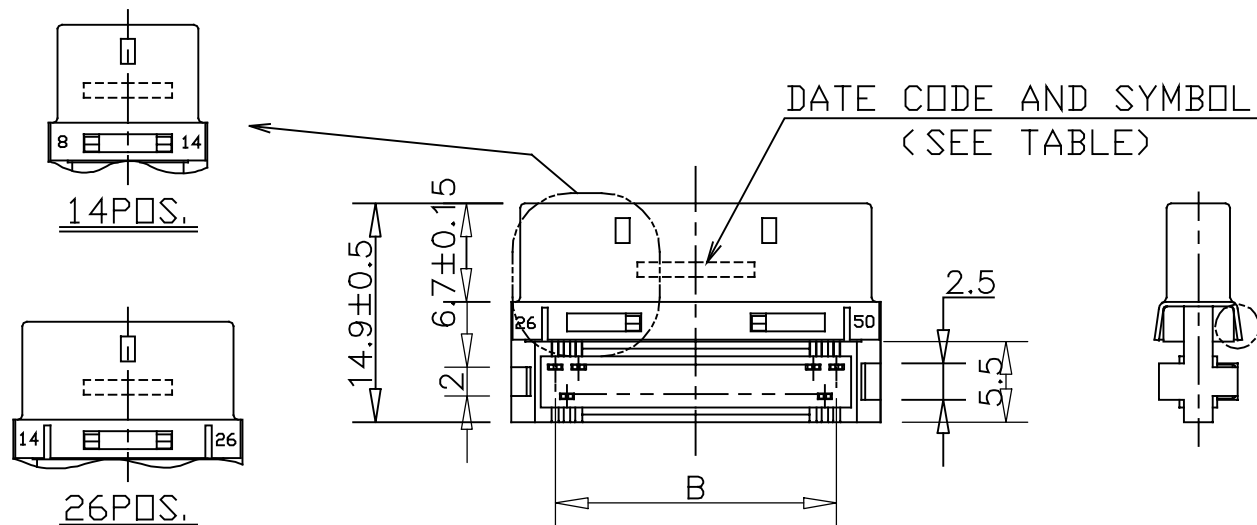


HONDA
PRINT RM
MAR. 27. 2000
ISSUED



X-X SECTION(5/1)

1. CONTACT PLATING
MATING AREA: 0.76 MICRO METERS MINIMUM GOLD PLATING
TERMINATION AREA: 2.6 TO 5 MICRO METERS MINIMUM
TIN/LEAD PLATING
UNDERPLATING: NICKEL PLATING
- △ 2. APPLICABLE HOOD
HDR-E()LP()
3. MATING CONNECTOR
HDR-EA()LFY()G1
HDR-EC()LFY()G1
4. ASSEMBLY TOOLS
WIRE ARRANGING TOOL: FHAT 0029
IDC PRESS TOOL: FHPT 923B
5. SPECIFICATION
RATED CURRENT 0.5A
RATED VOLTAGE 125V AC(r. m. s.)



PART NO.	APPLICABLE WIRE SIZE	SYMBOL	CABLE HOUSING COLOR
HDR-E()MG1	28AWG(7/0.127) INSULATION O. D Ø0.58	MG1	BLACK
HDR-E()MAG1	30AWG(7/0.1) INSULATION O. D Ø0.58	MAG1	BLACK
HDR-E()MBG1	32AWG(7/0.08) INSULATION O. D Ø0.44	MBG1	GRAY

5	CABLE HOUSING	PBT	2	—	UL 94V-0 SEE TABLE
4	SPACER	PBT	2	—	UL 94V-0 BLACK
3	INSULATOR	PBT	1	—	UL 94V-0 BLACK
2	SHELL	STEEL	1	NICKEL PLATING	—
1	MALE CONTACT	PHOSPHOR BRONZE	n	NOTE#1	—

LTR.	DATE	BY	REV.	DESCRIPT	NO.	PART NAME	MATERIAL	QTY	FINISH	NOTE
	MAR. 27 2000	Y. K		NOTE						
DATE		SCALE		UNIT		HONDA TSUSHIN KOGYO., LTD.				
MAR. 24, 2000		2 / 1		mm(INCH)		3RD . A . P				
DR.	DE.	CHK.	CHK.	APP.	NAME		0.8mm SPACING SHIELDED MALE CABLE CONNECTOR(IDC)			
					PART NO.		HDR-E()M()G1		REV. 1A	

HDR-E50M()G1	50	25.2	0.8×24=19.2	23.4
* HDR-E36M()G1	36	19.6	0.8×17=13.6	17.8
HDR-E26M()G1	26	15.6	0.8×12=9.6	13.8
HDR-E14M()G1	14	10.8	0.8×6=4.8	9.0
PART NO.	n NO. OF POS.	A	B	C
DIMENSION				

* UNDER
CONSIDERATION

HDR-E()M()G1