

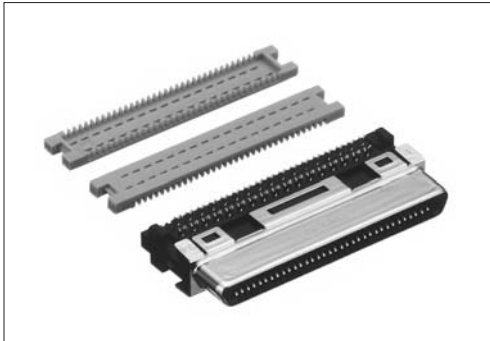
IDC type female connector for cable
HDRA-E68FAG1+

For cable

IDC

RoHS

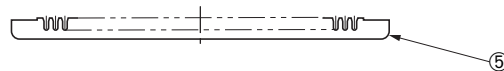
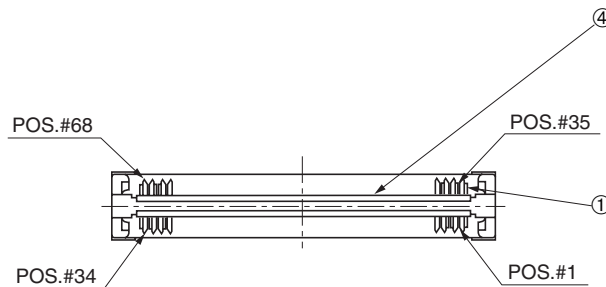
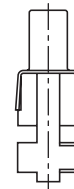
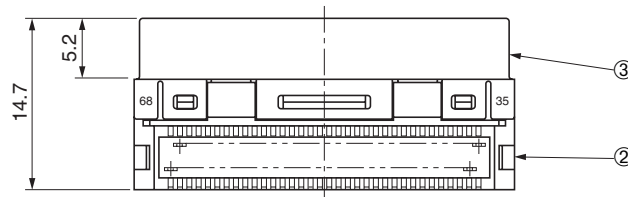
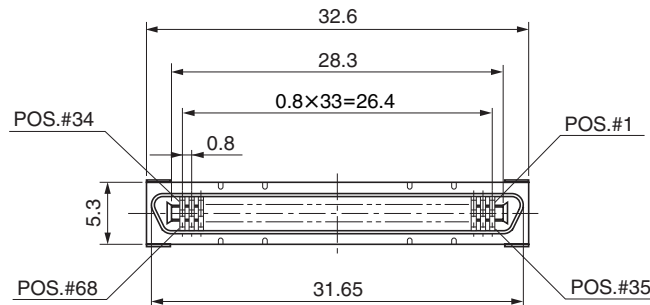
ANSI/SFF8441



● Configuration of product Part No.

HDRA- E 68 F A G1+

- ① Series name
- ② No. of contacts: 68
- ③ Type of contact
F: IDC type, female
- ④ Compatible cable
A: AWG#30 (7/0.1), dia. 0.58 mm
- ⑤ Contact plating
G1: 0.76 μm or more Gold plate



● Components

①	Contacts
②	Insulator
③	Shell
④	Spacers
⑤	Cable housing

Mating connector: HDRA series right-angle through hole type or straddle SMT type male connector

Required tool: Termination tool: FHAT-0029, IDC tool: FHPT-923B, Hand presser: MFC-K1 (Refer to page Tool-10)